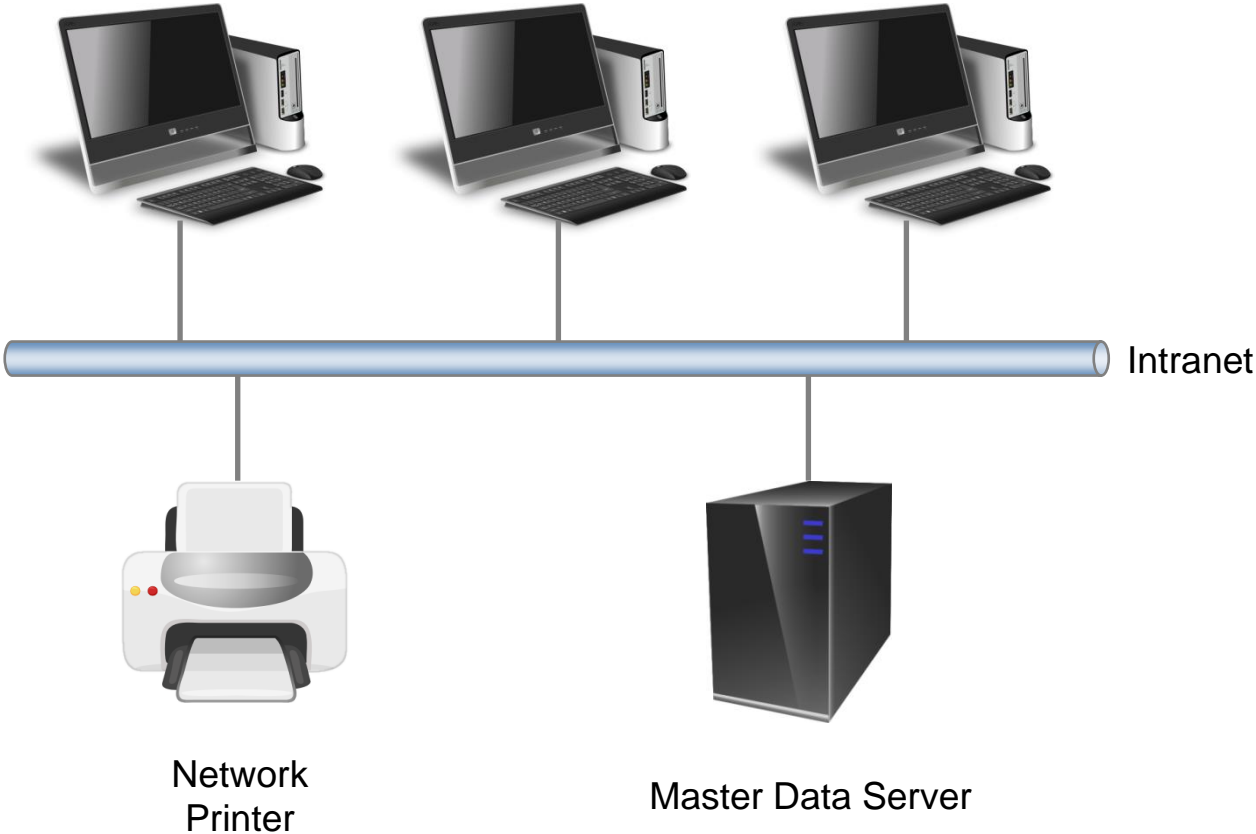
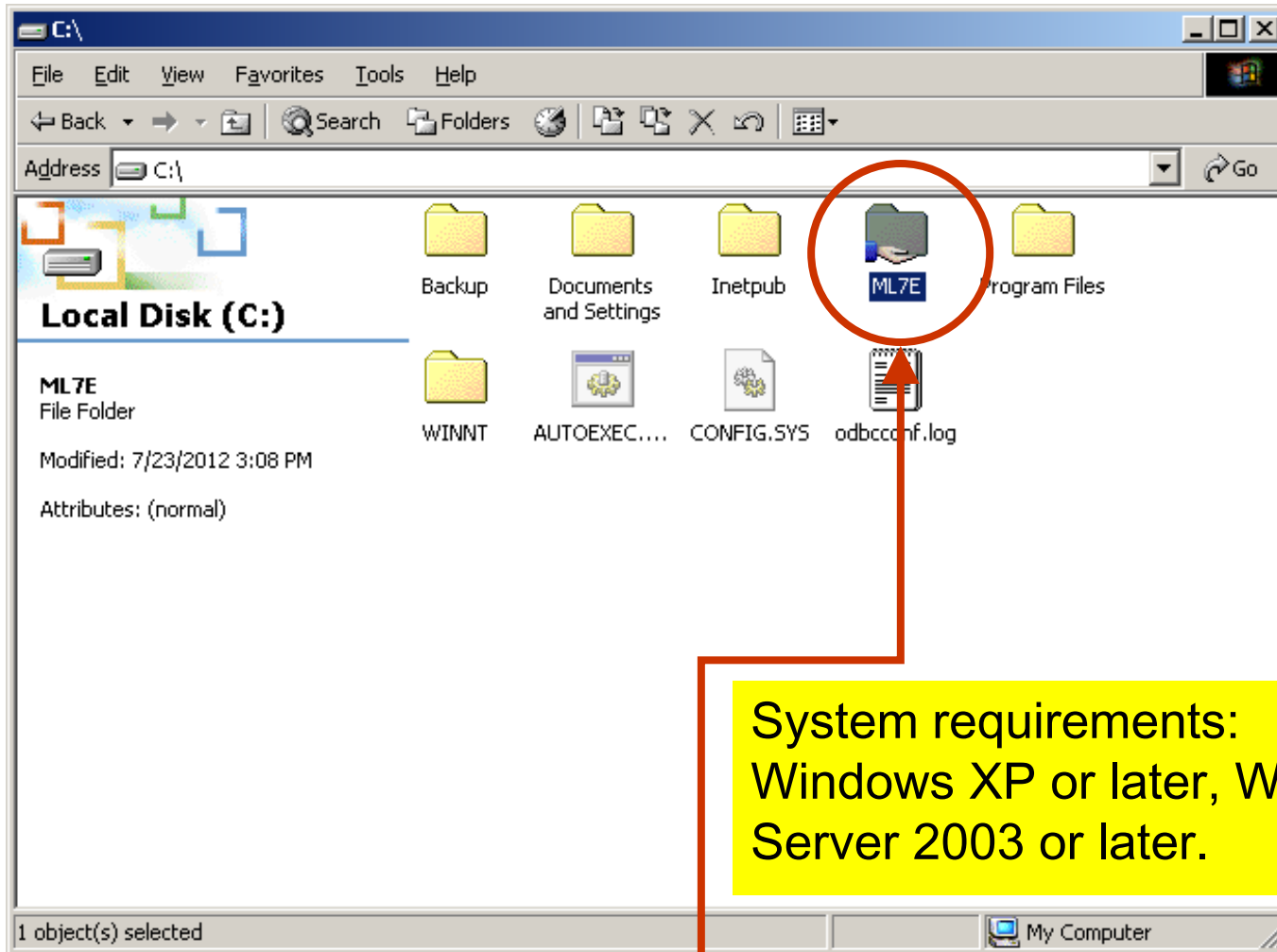


Server & Client Setting-Multi Users

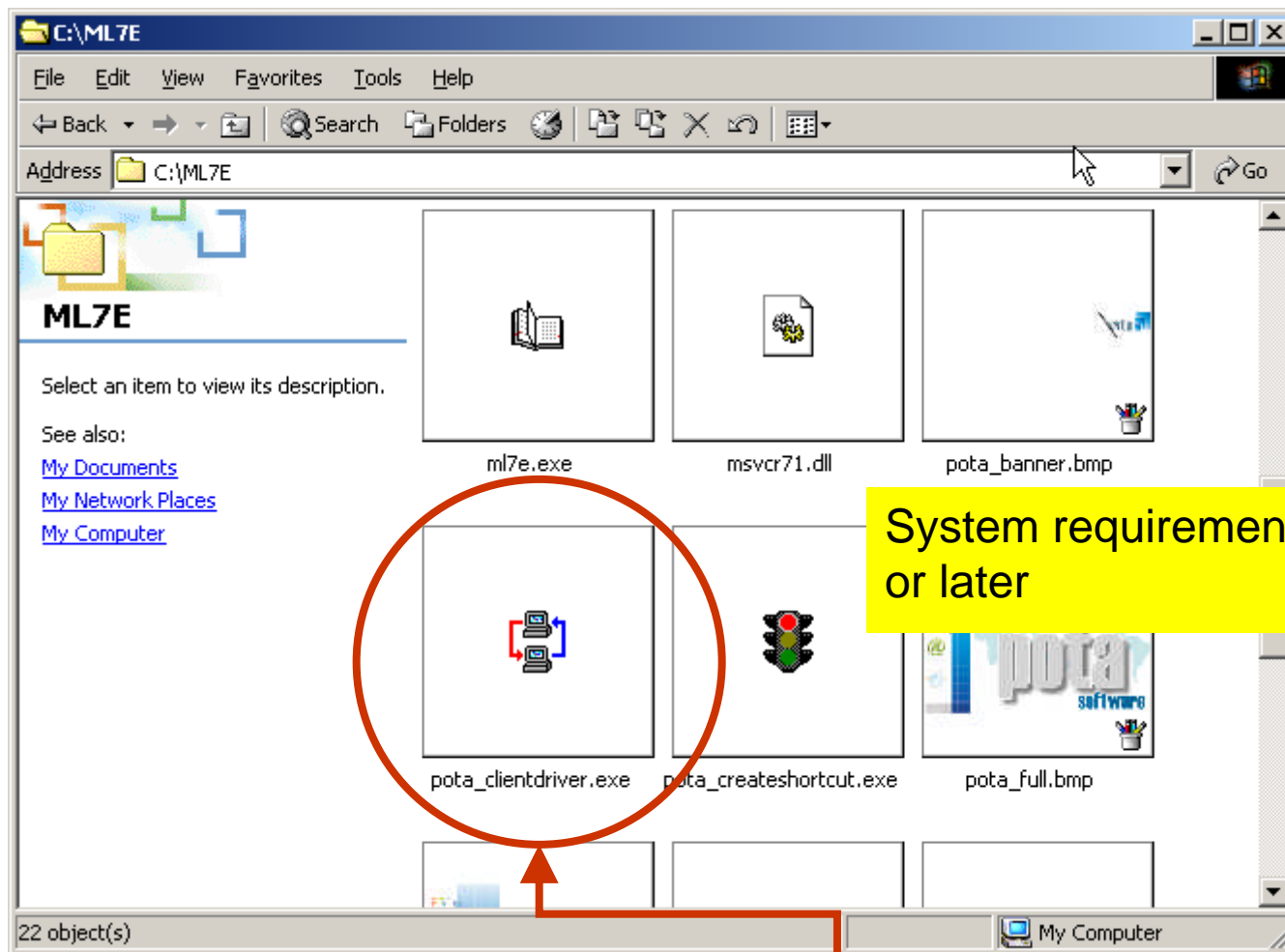




System requirements:
Windows XP or later, Windows
Server 2003 or later.

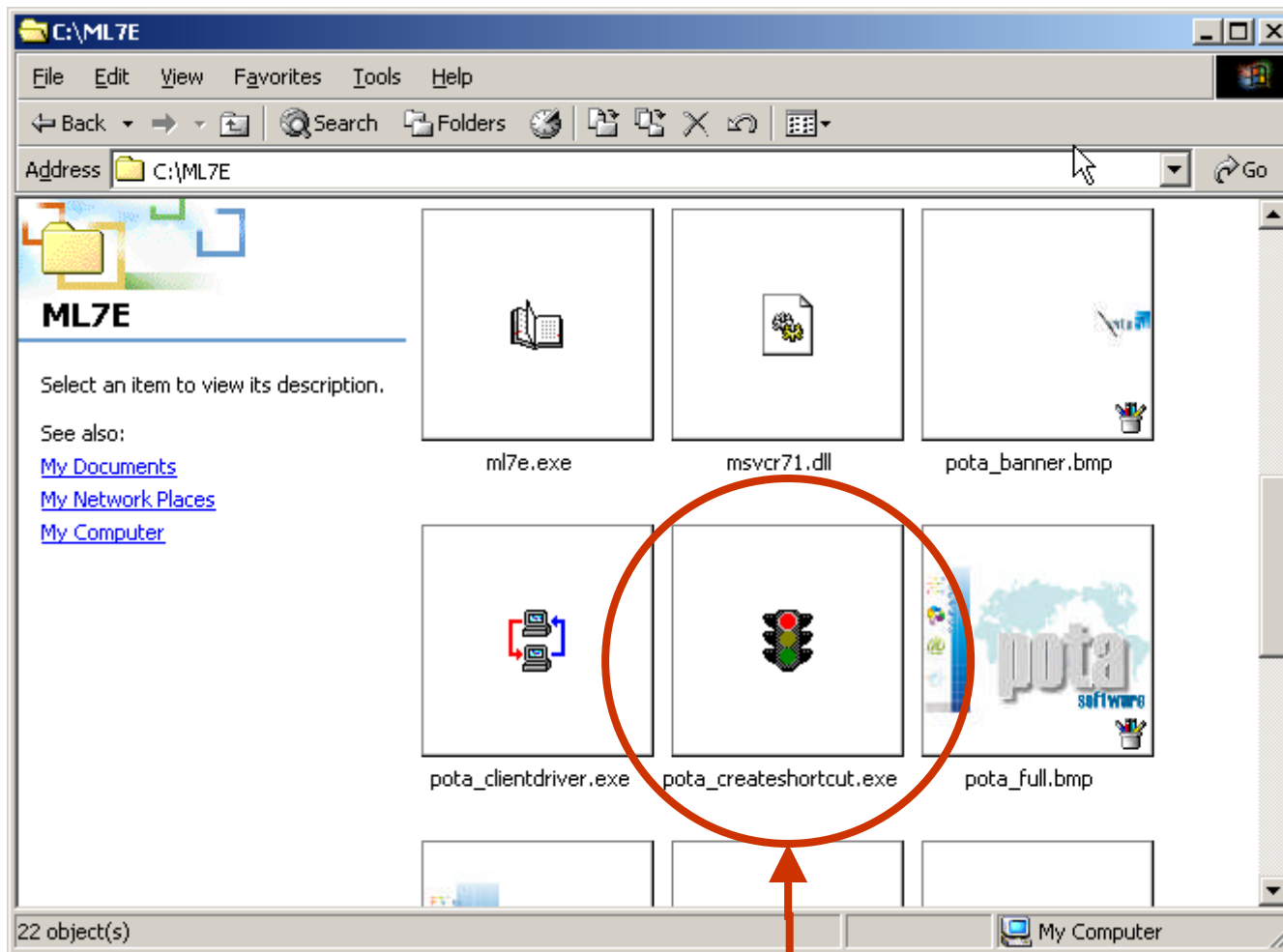
Share the installed folder (named ML7E)

-Get the driver



Double click "pota_clientdriver.exe" to set up from client's PC

-Get the shortcut



Double click "pota_createshortcut.exe" to set up from client's PC

-Unlimited Clients

POTA soft Multi User License includes one key with permissions to install the software on server together with multiple workstations.

